






GCSE PROSPECTUS

2025

 @ymll_wreccsam
 @YsgMorganLlwyd
 Ysgol Morgan Llwyd Wreccsam

01978 315050 
Ysgol Morgan Llwyd, Cefn Road,
Wreccsam, LL13 9NG 
www.ysgolmorganllwyd.cymru 
bocspost@ysgolmorganllwyd.wrexham.sch.uk 

TABLE OF CONTENTS



1	INTRODUCTION
2	CONTACT DETAILS
3	WELSH LITERATURE & LANGUAGE (DOUBLE AWARD)
4	WELSH LITERATURE & LANGUAGE (SINGLE AWARD)
5	ENGLISH LITERATURE & LANGUAGE (SINGLE
6	MATHEMATICS
7	SCIENCE (DOUBLE AWARD)
8	WELSH BACCALAUREATE
9	ART & DESIGN
10	BUSINESS RETAIL
11	BUSINESS STUDIES
12	CHILDCARE & HEALTH AND SOCIAL
13	CONSTRUCTION

TABLE OF CONTENTS



14

DRAMA

15

ENGINEERING

16

FASHION & TEXTILES

17

FRENCH & SPANISH

18

GEOGRAPHY

19

HISTORY

20

HOSPITALITY & CATERING

21

ICT & DIGITAL TECHNOLOGY

22

MEDIA

23

MUSIC

24

PHYSICAL EDUCATION

25

PRODUCT DESIGN

26

RELIGIOUS STUDIES

27

TRIPLE SCIENCE



INTRODUCTION

The purpose of this guide is to share information with year 9 pupils and their parents regarding 2025 GCSE options.

Every pupil will study the core subjects; Welsh, English, Mathematics, Science and the Welsh Baccalaureate and they will also choose three options.

This booklet provides information about these options. It is part of a programme of events organised by the school to help year 9 with their option choices.

For further information and to view the full subject specifications, please visit the WJEC website: www.wjec.co.uk

Mrs Einir Lois Jones
Deputy Headteacher





CONTACT DETAILS



01978 315050



Ysgol Morgan Llwyd, Cefn Road,
Wrecsam, LL13 9NG



www.ysgolmorganllwyd.cymru



[bocspost@ysgolmorganllwyd.
wrexham.sch.uk](mailto:bocspost@ysgolmorganllwyd.wrexham.sch.uk)



@ymll_wrecsam



@YsgMorganLlwyd



Ysgol Morgan Llwyd Wrecsam

WELSH LITERATURE & LANGUAGE DOUBLE AWARD



Introduction:

"The Welsh language is one of the treasures of Wales. It is part of what defines us as a people and as a nation." (Welsh Government, Cymraeg 2050: A million Welsh speakers, 2017, p.2). It is the Welsh Government's ambition to reach the target of 'a million Welsh speakers' by 2050 and you are one of the million! This is a new and exciting qualification in which you will be studying a wealth of literature that will ignite your imagination, build your enthusiasm and prepare you to communicate and live through the medium of Welsh.

What Will I Study?:

UNIT 1 (Narrative) - in this unit you will study a Welsh contemporary novel and learn how to appreciate the contents, characters, themes and plot. You will also respond to the novel in a personal and creative way.

UNIT 2 (Identity) - in this unit you will study a visual text i.e. a film or television programme, and as a group you will undertake a discussion of the plot, characters and the themes. You will develop your listening and responding skills as well as the skill of communicating confidently in Welsh.

UNIT 3 (Attitudes) - in this unit you will study a collection of poetry to learn how to appreciate their content, style and messaging. You will also individually present information orally on the text of your choosing.

UNIT 4a (Linguistic Connections) - in this unit you will read a variety of written texts and you will learn how to combine and summarise information. You will also respond creatively to the texts in a variety of different forms.

UNIT 5 (Respond and Create) - in this unit you will respond and interact orally as a group to a contemporary text whilst also developing your skills in terms of expressing your opinions. You will also have the opportunity to write creatively as part of the coursework.

UNIT 6 (Conveying Meaning) - in this unit you will study a collection of short stories and you will learn how to compare and appreciate literary texts.

How Will I Be Assessed?:

EXAM - There will be three written examinations worth 60% of the Double Award qualification for units 1, 4b and 6. The exams for Units 1 and 6 will be 90 minutes long, and the Unit 4 exam will be 120 minutes long. The exams will consist of a variety of comprehension questions, extended answers and the opportunity to write creatively.

NON-EXAMINATION ASSESSMENT - There will be five non-examination assessments worth 40% of the Double Award qualification for units 2, 3 and 5. There will be two group oral assessments, one individual oral assessment and two written assessments (coursework).

What Skills Will I Develop?:

GCSE Cymraeg Language and Literature is a core subject which will help you to develop the variety of skills listed below:

- the skills and strategy of learning a language
- reading, listening, speaking and writing skills
- skills related to interacting as part of a pair or group whilst listening to others, expressing an opinion and forming conclusions
- written creative skills by reading a wide range of forms
- literary appreciation skills
- public speaking skills
- foster enthusiasm for the Welsh language for further study, in the workplace and in the community.

Career Within The Subject:

The purpose of this qualification is to inspire you to be citizens that take pride in your nation's culture, history and language. Jobs advertised in Wales often require the ability to speak Welsh as essential or desirable. If you have a GCSE Cymraeg Language and Literature qualification you already have an advantage over others! The ability to speak Welsh is important and advantageous in all areas including education, health and care, the government, media and entertainment, sport, law, marketing and much more. The journey to a million Welsh speakers by 2050 is an exciting one and you are a part of it.

WELSH LITERATURE & LANGUAGE SINGLE AWARD



Introduction:

"The Welsh language is one of the treasures of Wales. It is part of what defines us as a people and as a nation." (Welsh Government, *Cymraeg 2050: A million Welsh speakers*, 2017, p.2). It is the Welsh Government's ambition to reach the target of 'a million Welsh speakers' by 2050 and you are one of the million! This is a new and exciting qualification in which you will be studying a wealth of literature that will ignite your imagination, build your enthusiasm and prepare you to communicate and live through the medium of Welsh.

What Will I Study?:

UNIT 1 (Narrative) – in this unit you will study a Welsh contemporary novel and learn how to appreciate the contents, characters, themes and plot. You will also respond to the novel in a personal and creative way.

UNIT 2 (Identity) – in this unit you will study visual text i.e. a film or television programme, and you will form a group discussion with regards to the plot, characters and the themes. You will develop your listening and responding skills as well as the skill of communicating confidently in Welsh.

UNIT 3 (Attitudes) – in this unit you will study a collection of poetry to learn how to appreciate their contents, style and messaging. You will also individually present information orally on the text of your choosing.

UNIT 4a (Linguistic Connections) – in this unit you will read a variety of written texts and you will learn how to combine and summarise information. You will also respond creatively to the texts in a variety of different forms

How Will I Be Assessed?:

EXAM – There will be two written examinations worth 60% of the Single Award qualification for units 1 and 4. The two exams will be 90 minutes long and they will include a variety of comprehension questions, extended responses and the opportunity to write creatively.

NON-EXAMINATION ASSESSMENT – There will be three non-examination assessments worth 40% of the Single Award qualification for units 2 and 3. There will be two oral assessments (individual and group) and one written assessment (coursework).

What Skills Will I Develop?:

GCSE Cymraeg Language and Literature is a core subject which will help you to develop the variety of skills listed below:

- the skill and strategy of learning a language
- reading, listening, speaking and writing skills
- skills related to interacting as part of a pair or group whilst listening to others, expressing an opinion and form conclusions
- written creative skills by reading a wide range of forms
- literary appreciation skills
- public speaking skills
- foster enthusiasm for the Welsh language for further study, in the workplace and in the community.

Career Within The Subject:

The purpose of this qualification is to inspire you to be citizens that take pride in your nation's culture, history and language. Jobs advertised in Wales often require the ability to speak Welsh as essential or desirable. If you have a GCSE Cymraeg Language and Literature qualification you already have an advantage over others! The ability to speak Welsh is important and advantageous in all areas including education, health and care, the government, media and entertainment, sport, law, marketing and much more. The journey to a million Welsh speakers by 2050 is an exciting one and you are a part of it.



ENGLISH LITERATURE & LANGUAGE (SINGLE & DOUBLE AWARD)

Introduction:

The GCSE English Language and Literature Double Award enables you to appreciate how language connects you to the world around you, to engage with a rich range of texts from different periods and by diverse writers, and to develop and apply your own use of language, through written and verbal communication.

What Will I Study?:

Unit 1 CONTEXT AND MEANING – in Unit 1, you will study a range of poetry from the WJEC anthology, engaging with the concept of Context and Meaning.

Unit 2 BELONGING – in Unit 2, you will study a prose text, engaging with the concept of Belonging and themes of community, cynefin and citizenship.

Unit 3 INFLUENCE AND POWER – in Unit 3, you will study a range of non-fiction texts, engaging with the Influence and Power of writers, and how writers and speakers exert power and attempt to influence others.

Unit 4b MOTIVATIONS – in Unit 4b, you will have a choice to study a play or a prose text, engaging with the concept of Motivations of writers and characters, exploring reasons for attitudes, behaviours and beliefs.

Unit 5 CONTINUITY AND CHANGE – in Unit 5, you will study a Shakespeare play and pre-20th LC poetry. You will consider the concept of Continuity and Change, and how attitudes, ideas and language have changed over time.

Unit 6 CONNECTIONS – in Unit 6, you will study non-fiction texts, focusing on the concept of Connections. You will explore links between different texts, relating texts to time, place, language, and relationships.

How Will I Be Assessed?:

Units 1, 4b and 6 are examined units, together worth 60% of your qualification. Each exam lasts 90 minutes and will consist of low-tariff extract-based questions, an extended essay response and a piece of creative fiction or non-fiction writing. Units 2, 3 and 5 are non-examined assessments, together worth 40% of your qualification. Each unit will consist of two tasks, one that will assess your written response to the relevant text(s) and one that will assess your oracy skills.

What Skills Will I Develop?:

GCSE English Language and Literature is a core subject and as such helps to develop a wide range of skills for your future:

- Communication Skills – expressing yourself through clear and creative use of language
- Reading Skills – reading, listening to and researching a range of texts, analysing meaning and scrutinising reliability
- Contextual Analysis Skills – engaging with the significance of purpose, audience, and contexts of speaking, reading and writing
- Literacy Skills – developing and applying an understanding of grammar and uses of vocabulary.

Career Within The Subject:

GCSE English Language and Literature is designed to equip you with a rich variety of skills for your future in education and the workplace. It is a widely valued qualification that provides a strong foundation for further study of literature, language, and a wide range of other academic subjects at A level and beyond. It can open the door to an array of career paths such as law, journalism, media production, advertising, marketing, teaching, politics, public relations, and publishing.

MATHEMATICS

Introduction:

In GCSE Mathematics & Numeracy, you will build on the knowledge and understanding you have of topics within number, algebra, geometry, and data. You will be taught the key financial aspects of everyday adult life, such as dealing with pay slips, bills, and savings. A good understanding of the content of this qualification is the perfect platform to those hoping to follow a STEM career.

What Will I Study?:

The course has 3 units:

UNIT 1: Financial Mathematics and Other Applications of Numeracy In this unit you will learn life lessons that will help you become a financially well-informed adult. Think about terms or acronyms you may have heard about like ‘National Insurance’, ‘VAT’ or ‘AER’ – these will become familiar to you. Financial opportunities and pitfalls will be addressed, and you will learn how to read important documents like payslips, bills and bank statements. All sorts of other real-world contexts will also be taught and assessed, making this unit relevant and interesting.

UNIT 2: Non-calculator You will explore concepts where you won’t need your calculator in this unit. You will deepen your understanding of probability and explore new ideas within algebra and geometry, like quadratic graphs and circle theorems.

UNIT 3: Calculator-allowed This unit has the biggest weighting of all three units, and you can have your calculator by your side. There is lots of data handling and statistics in this unit as well as new geometry concepts such as Pythagoras’ Theorem and Trigonometry.

How Will I Be Assessed?:

UNIT 1: Financial Mathematics and Other Applications of Numeracy		UNIT 2: Non-calculator		UNIT 3: Calculator-allowed	
Higher tier	Foundation tier	Higher tier	Foundation tier	Higher tier	Foundation tier
1 hour 45 minutes	1 hour 30 minutes	1 hour 45 minutes	1 hour 30 minutes	2 hours	1 hour 45 minutes
80 marks	65 marks	80 marks	65 marks	90 marks	75 marks
Weighting: 30% of the qualification		Weighting: 30% of the qualification		Weighting: 40% of the qualification	

What Skills Will I Develop?:

- You will develop an understanding of the different areas of mathematics and how they relate to each other.
- You will extend your range of mathematical skills and techniques and be able to use and apply them to a range of real-life contexts.
- You will gain a strong foundation in financial mathematics to prepare you for life and work.

Career Within The Subject:

A GCSE in Mathematics and Numeracy can lead to a variety of career paths. These include jobs such as: financial analyst, computer programmer, medical scientist, actuary, software developer, economist, data or research analyst, accountant, teacher.

SCIENCE DOUBLE AWARD



Introduction:

Science is key in understanding the world around us. Biology is the study of living things, how they survive, interdepend and evolve. Chemistry is the study of materials, their properties, structure and reactions. Physics is the study of phenomena that we cannot see such as energy and forces and how they govern our daily lives. As well as understanding the world around us, you will develop scientific skills through practical work. These skills can help you assess the validity of information and data, evaluate them and draw conclusions based on the information or data held. In a world full of information and 'fake news', these skills are essential, even if you are not progressing into a scientific career.

What Will I Study?:

You will follow a WJEC GCSE Science (Double Award) course.

The specification is divided into the three subjects with 2 units in each subject; Biology, Chemistry and Physics.

3 units are taught in year 10 and 3 units are taught in year 11.

Standard practical work is included in all units and external practical exams.

This course has 2 tiers: Higher Tier A*-E, Foundation Tier C-G.

The units can be varied (e.g. pupils can sit a Biology higher tier paper and a Chemistry foundation tier paper.)

How Will I Be Assessed?:

Year 10 – 3 units are assessed through a written exam in June (45%).

Year 11– The remaining 3 units are assessed through a written exam in May (45%).

The practical exam (Spring term of year 11) is worth 10%.

Homework & Independent Work:

- Each pupil has 3 teachers who set homework every 3 weeks. On average, pupils will have one piece of homework a week.
- Pupils are expected to read over their classwork following lessons and raise any concerns or difficulties with the appropriate teacher.

What Skills Will I Develop?:

Communicating information; clear and concise communication skills using technological language. Planning skills, making accurate and precise measurements, reporting back, drawing conclusions and the ability to evaluate information.

Career Within The Subject:

Engineering, electrician, doctor, veterinary surgeon, nurse, midwife, childcare, environmental work, working with animals, construction, catering, hairdressing.



WELSH BACCALAUREATE

Introduction:

The Welsh Baccalaureate is a subject where ALL students can succeed! It is a subject where a range of skills are taught and used to build businesses, connections with the community, and confidence.

What Will I Study?:

Here at Ysgol Morgan Llwyd, we teach the Welsh Baccalaureate in three separate parts, which are: Enterprise and Employability, Community Challenge, and Individual Investigation

How Will I Be Assessed?:

These three parts are assessed internally by the baccalaureate teachers and are then moderated internally before passing on our marks to the WJEC for a sample to be externally marked.

The Enterprise and Employability and Community Challenge are both completed and assessed during year 10 and then during the final half-term in year 11, the students go on to complete the individual investigation. All grades will be awarded during the results' day in August after they finish in year 11.

Homework & Independent Work:

Most of the work will be completed during their twice-weekly lessons in year 10, and then they will be expected to work on their individual projects independently during their free time with the guidance of their form tutors.

They will also be allowed time during registration once a week to complete some of the work to lessen their workload

What Skills Will I Develop?:

You will develop skills such as:

Communication, Working with others, Numeracy, ICT, Literacy, Critical thinking and problem-solving, Planning and organisational skills, Creativity and innovation, Entrepreneurial skills, Researching and presenting information

Career Within The Subject:

Lecturer, Charity Fundraiser , Entrepreneur, Youth Worker, Community Worker, Police Community Support , Officer, International Relations, Officer, Events Manager, Market Stall Trader, Social Worker, Journalist, Broadcasting , Presenter, Care Assistant, DJ, Payroll Administrator, Accountant, Visual Effects Artist, IT, Helpdesk Operator, Assistant Quantity, Surveyor.



ART AND DESIGN

Introduction:

The WJEC GCSE Art and Design qualification will support you to:

- explore the work of artists and designers to help develop your own creative talent
- develop creative skills so that you can plan, devise and design your own work
- gain practical skills, becoming increasingly sophisticated and controlled
- reflect on, evaluate and refine your work
- explore diversity, identity and culture

What Will I Study?:

Art and Design qualification is available in the following pathways:

- Art, craft, and design
- Fine art • Graphic communication
- Textile design
- Three-dimensional design
- Photography

How Will I Be Assessed?:

Unit 1 – Portfolio Assessment Type: Non-exam assessment 60% of qualification: 120 marks This unit is designed to enable you to develop knowledge, understanding and skills within the creative process. You will be encouraged to make personal discoveries and take creative risks through your own investigations. You will be required to produce a portfolio:

- through a sustained project that shows development, refinement, reflection and presentation
- that is internally set, in consultation with your teacher, based on a theme, concept or specific design brief.

Unit 2 – Externally Set Assignment (ESA) Assessment Type: Non-exam assessment 40% of qualification: 80 marks The ESA contains five overarching ‘big ideas’. You must choose one big idea and use given stimuli as a starting point to inform your work. You will undertake contextual and practical research and supporting studies during a preparatory period. This will inform your response during a 10-hour ‘sustained focus’ period.

What Skills Will I Develop?:

You will learn to use a broad range of media, techniques, tools, digital technologies and processes depending on which pathway you choose. You will develop the skills to create artefacts – whether that is painting, fashion design, content creation, photography, or architectural models (to name a few possibilities). You will learn how to develop creative processes and working methods to develop the visual outcomes that you choose.

You will also learn and understand about working independently (with teacher support) to develop your own ideas and to meet deadlines set for your work. Through all of this, you will gain an awareness of sustainability in art and design as well as a deeper understanding of culture and identity through engaging with your emerging work.

Career Within The Subject:

This qualification provides a suitable foundation for the study of Art and Design at A-level. It will also provide a satisfying course of study for you if you choose not to progress to study further. The career possibilities that come through the study of art and design are vast, a few are listed here: Advertising, Animator, Architect, Art Therapist, Book Designer, Cartoonist, Ceramicist, Cinematographer, Costume Designer, Digital Artist, Exhibition Designer, Furniture Designer, Fashion Designer, Fine Artist, Film researcher, Food Stylist, Graphic Artist, Game Designer, Interior Designer, Illustrator, Jewellery Designer, Knitwear designer, Landscape Architect, Lighting Designer, Make-up artist, Medical Illustrator, Model Maker, Muralist, Product Designer, Photographer, Potter, Puppet Maker, Printmaker, Production Designer, Sculptor, Silversmith, Special Effects Artist, Stained Glass Artist, Tattoo Artist, Teacher, Theatre Designer, TV Director, Textile Designer, Typographer, Urban Designer, Video artist.



BUSINESS RETAIL

Introduction:

Do you have an interest in Business and retail? This WJEC Level 1/2 Business Retail course introduces learners to one of the most important employment sectors in the UK, exploring various aspects of retail business and investigating a range of retailers from large chains and department stores through to independent and virtual stores.

This course is more practical than the theory-based Business Studies GCSE and allows students to show their understanding through coursework assignments as well as a written exam. Many of the tasks have the characteristics of real work in retail businesses.

What Will I Study?:

There are 4 mandatory units in the course;

1. Customer experience, 2. Retail business, 3. Retail Operations and 4. Promotion for retail business.

There are 2 optional units; 1. Stock control in retail business and 2. Selling retail products.

How Will I Be Assessed?:

Unit 2- 75 min exam

Unit 4-6: Hour timed, supervised assessments.
(Externally set).

The other 3 units are internal assessments based on model assignments.

Homework & Independent Work:

- Homework will be set regularly.
- Pupils are expected to conduct independent research towards their assignments.

What Skills Will I Develop?:

The course requires and promotes several generic and transferable skills such as the ability to work independently, problem solving, working as part of a team, communication and digital literacy.

Career Within The Subject:

Successful completion of the qualification could lead to learners starting a career in a junior role, such as sales assistant, stock control assistant, administrative assistant, or an apprenticeship.

Alternatively, if they have studied retail business and related subjects at a higher level, learners would be able to seek a more senior or specialist role including merchandiser, buyer, visual merchandiser or trainee manager.



BUSINESS STUDIES

Introduction:

The WJEC GCSE Business qualification will develop your understanding of the activities that make a business successful. You will gain an insight into critical issues facing businesses and ways in which these can be solved. You will undertake research to make reasoned judgements and think critically about businesses in your area. You will also reflect on business activity in the context of the environment and sustainability. You will study the impact business has on society. You will explore job market trends and understand different business careers and employment opportunities available to you.

What Will I Study?:

Unit 1 INTRODUCTION TO THE BUSINESS WORLD – in this unit, you will study the fundamentals of business. You will explore the purpose of business activity and the nature of business enterprises, understanding the different types of business ownership and aims. Additionally, you will learn about markets and business sectors, and the importance of the consumer. You will calculate costs and revenue to make business decisions.

Unit 2 KEY BUSINESS CONSIDERATIONS – in this unit, you will undertake research on a chosen business in your locality and to use your research findings to produce a report.

Unit 3 BUSINESS STRATEGIES FOR SUCCESS – in this unit you will explore the key business functions of finance, marketing, human resources, and production. Additionally, you will study strategies for business growth and understand how businesses are affected by political, legal, and economic external factors.

Unit 4 BUSINESS CREATION – in this unit, you will develop enterprise skills. You will carry out primary and secondary market research to collect information for an entrepreneurial opportunity you have identified. You will produce a report that covers key aspects of your business proposal.

How Will I Be Assessed?:

Units 1 and 3 are assessed by written examinations containing both short and extended answers, with some based around business situations. Unit 2 and 4 are non-examined assessments where you will be given an assignment brief to complete. You will undertake research, analyse the data and provide judgements.

What Skills Will I Develop?:

GCSE Business helps to develop a wide range of skills for your future:

- Literacy Skills – reading, writing, understanding, and engaging with various forms of text and information.
- Numeracy Skills – understanding, interpreting, and working with numbers to solve business problems.
- Critical Thinking and Problem Solving – analysing business information to make decisions or judgments.
- Personal Effectiveness Skills – achieving your goals by managing your time, setting targets and learning from your experiences.
- Creativity and innovation - thinking creatively, by coming up with solutions to business problems.

GCSE Business will equip you with a range of skills that are not only valuable for studying business further, but which will combine with a variety of subjects.

Career Within The Subject:

GCSE Business will prepare you for many careers in business and industry. These include in marketing and public relations, law, finance and accounting, human resource management, as well as manufacturing and production. An understanding of the principles of management is applicable to many roles in both the public and private sector and will be valuable for whatever career path you choose.



CHILDCARE & HEALTH AND SOCIAL

Introduction:

The WJEC GCSE in Health and Social Care, and Child Care, equips learners with knowledge, understanding and skills about the development of individuals, and how to care for them throughout the life cycle, from conception to old age. Learners will develop their understanding of influences on human growth, development, behaviour and well-being. They will also gain an understanding of the social, physical, emotional and cultural needs of people who use care and support services, and recognise that everyone has their own unique abilities and needs.

What Will I Study?:

External Assessment: 2 x 90 minute external exam on topics relating to human growth, development and well-being. One exam will be taken in year 10 and one in year 11. Both are worth 20% each.

Internal Assessments: 2 units of coursework on a topic that involves promoting and maintaining health and well-being. One completed in year 10 and one in year 11. Both worth 30% each.

How Will I Be Assessed?:

Internal assessments: 2 projects, one in year 10 and one in Year 11 equivalent to 60% of the final grade.

External exams: one in year 10 and one in year 11 equivalent to 40% of the final grade

Homework & Independent Work:

- Homework will be set weekly.
- Pupils are expected to do their own independent study for their assessments.

What Skills Will I Develop?:

By studying Health and Social Care, and Childcare learners will be able to develop and apply skills relevant to health and social care, and childcare including using and interpreting data, develop an awareness of career pathways available within the health and social care, and childcare sector.

Career Within The Subject:

Childcare, Specialist nurse: Children/Mental care/Learning difficulties/health visitor, Social Carer, Teacher, Nanny, Health care assistant, Social worker, Nursery nurse.



CONSTRUCTION

Introduction:

The construction industry employs over 3 million people in the UK and offers a diverse range of employment opportunities. This is a practical course with plenty of opportunities to work in the workshop as well as learning in the classroom. Every pupil will aim to complete the level 2 course (A*-C) but if needed, they can also work on level 1 (D-G).

What Will I Study?:

The Level 1 / 2 Awards in Construction and Built Environment have been designed around the concept of a 'plan, do, review' approach to learning.

This mirrors many work-related activities in the construction industry and allows learning to take place in a range of contexts.

How Will I Be Assessed?:

Unit 1— Safety and security in construction (external exam)

Unit 2— Practical construction skills (internal assessment)

Unit 3— Planning construction projects (internal assessment)

Homework & Independent Work:

- Homework will be set every 2 weeks.

What Skills Will I Develop?:

- Practical skills (joinery, electric, brick-laying, plumbing)
- IT
- Literacy
- Numeracy
- Problem solving

Career Within The Subject:

Careers are available in all phases of the construction process including initial ideas and designs, building and the ongoing planning and maintenance of structures.

The course could prove useful to any students wishing to pursue a career in any craft or managerial role within the Construction industry.



DRAMA



Introduction:

The WJEC GCSE Drama qualification will support you to:
explore drama created and performed by other people to help develop your own talents, gain understanding of a range of techniques, forms, styles, genres and contexts, reflect on, evaluate and refine your work, explore diversity, identity and culture, discover and explore your performance and/or design skills

What Will I Study?:

The GCSE Drama qualification will allow you to explore and respond to stimuli, create and reflect on your own work, develop your own creativity and engage with many different styles of theatre.
You will also have the opportunity to build on your understanding of acting, directing, design and technical theatre.

How Will I Be Assessed? :

Unit 1 - Devising Theatre Practical non-exam assessment 40% of qualification: 96 marks

One devised piece in response to a chosen stimulus, performed in a group of between two and five actors and up to four designers.

Unit 2 - Performance from a Text Practical non-exam assessment 30% of qualification: 72 marks

A performance of one extract from a text of your choice. Assessed by a Visiting Examiner and performed in a group of between two and four actors and up to two designers.

Unit 3 - Interpreting Theatre

Assessment Type: On-screen examination (2 hours) 30% of qualification: 72 marks

The exam is broken into two sections: Section A and Section B. Section A will ask questions based on a set text you will have studied in lessons. Section B will ask questions based on an excerpt of a live theatre production from one of four set genres, that you will be able to watch in the exam. The genres are Musical Theatre, Naturalism, Theatre in Education or Physical Theatre.

What Skills Will I Develop?:

Exploring: you will have the opportunity to explore, experience and interpret many different styles and genres of theatre linked to different cultures in Wales and the world. You will be able to build on these ideas to create and develop your own theatre when devising and when working from a script.

Responding and reflecting: you will be able to recount, evaluate and refine your work through reflection and feedback from others, to create an exciting, imaginative and successful finished product. You will also be able to evaluate and analyse the work of others to inform your own creativity.

Creating: in Unit 1, you will devise your own original piece of theatre in response to a stimulus and in a style/genre of your choice, within a group of your peers. In Unit 2, you will work from a text of your choosing, also in a style of your choosing.

Career Within The Subject:

This qualification provides an excellent foundation for the study of Drama at A-level. It will also provide a satisfying and worthwhile course of study for you if you choose not to study further.

Importantly, studying Drama will develop many transferable skills including communication, presentation skills, team working, leadership, focus, refinement, creativity and self-confidence. The career options that come from studying Drama are extensive, but here are a few of those options:

Actor, Drama Therapist, Recruitment, Scenic Make Up Artist, Marketing Executive, Casting Director, Producer, Events Management, Script Writer, Stage Manager, Primary school teacher, University Lecturer, Make up and Prosthetics Technician, Teacher, Community Arts Manager, Playwright, Lighting Designer, Costumer Designer, Workshop Leader, Sound Technician, Studio Supporting Artist, Theatre Agent, Arts Administrator, Theatre Manager, Dramaturg, Theatre/TV Director, Broadcasting Crew, Researcher.



ENGINEERING

Introduction:

Engineering is a motivating force in the UK economy, accounting for 21.4% (£1.2 trillion) of the UK's £5.7 trillion turnover in 2018. However, there is a significant shortage of properly skilled workers in the engineering sector. The WJEC Level 1/2 Award in Engineering is designed to help learners who want to learn about this vocational sector and its career or further study potential.

What Will I Study?:

This is a vocational WJEC course that encourages pupils' practical skills as well as educating them about the industry. The course is awarded at pass, merit and distinction levels.

The units will include: 1. Manufacture of engineered products. 2. Design engineered products. 3. Solving engineering problems.

How Will I Be Assessed?:

Unit 1—Controlled assessment. 20 hours. 40% of the qualification.

Unit 2—Controlled assessment. 10 hours. 20% of the qualification.

Unit 3—Written exam. 90 minutes. 40% of the qualification

Homework & Independent Work:

- Homework will be set regularly
- Pupils will be expected to conduct independent research for their assignments

What Skills Will I Develop?:

The skills required for learning and those developed within the course are; ability to solve problems; investigative skills; design and numeracy.

Career Within The Subject:

The course provides a foundation for anyone interested in a career in the Engineering industry



FASHION & TEXTILES

Introduction:

This WJEC GCSE in Design and Technology offers a unique opportunity in the curriculum for learners to identify and solve real problems by designing and making fashion and textiles products. Through studying GCSE Design and Technology, learners will be prepared to participate confidently and successfully in an increasingly technological world; and be aware of, and learn from, wider influences on design and technology, including historical, social/cultural, environmental and economic factors. Pupils will have the opportunity to create a variety of fashion and home items and accessories and to further extend their sewing skills to create their own selected item in year 11.

What Will I Study?:

Unit 1 (Theory and exam)

Each learner will study four areas of content: 1. Core knowledge and understanding 2. In-depth knowledge and understanding for fashion and textiles 3. Core skills 4. In-depth skills for fashion and textiles.

Unit 2 (Timed controlled assessment)

Researching, designing and creating a fashion or textile item.

How Will I Be Assessed?:

- Linear course
- Internal assessments: A project in year 11 equivalent to 50% of the final grade.
- External exam in year 11 equivalent to 50% of the final grade.

Homework & Independent Work:

- Homework will be set weekly.
- Pupils are expected to do their own independent study for their assessments.
- Pupils are expected to attend additional sessions at lunchtime or after school

What Skills Will I Develop?:

Understanding design and technology practice takes place within contexts; identifying and understanding user needs; writing a design brief and specifications; investigating challenges; developing ideas; using design strategies; communicating design ideas; developing a prototype; making decisions.

Career Within The Subject:

Quality technician, hat weaver, fashion designer, interior designer, textile designer, personal/home accessories designer, pattern designer for fashion, sewing engineer, textile/fashion buyer, costume designer, image consultant

FRENCH & SPANISH

Introduction:

The WJEC GCSEs in French/Spanish have been designed to enable you to use languages in meaningful ways. You will learn how to understand the language and communicate in both speaking in writing in realistic settings. You will also develop an awareness of the culture and society of the countries and communities where the language is spoken and make connections with your own language and culture.

What Will I Study?:

The course has 4 units. Two are assessed in examinations in the final year of study. The other two units are completed as non-examination assessments in your classroom, also in your final year of study. You will learn useful language that you could use in situations relating to leisure and wellbeing, travel and study or work.

How Will I Be Assessed?:

UNIT 1 - Oracy Unit 1 is a non-examination assessment of speaking and listening and will be conducted by your teacher. Firstly, you will read aloud a short sentence to show your understanding of French/Spanish pronunciation. You will then take part in a role play. After this, you will give a short one-minute presentation that you will have prepared in advance and have a short discussion with your teacher about your presentation. Finally, you will take part in a short conversation with your teacher. This unit is worth 30% of the qualification.

UNIT 2 - Reading and Writing Unit 2 is also a non-examination assessment that you will complete in your classroom. With your classmates, you will study a short work (either a graphic novel, short story, film script or novel) in French/Spanish. You will then write a written response (up to 200 words) in French/Spanish about the short story/graphic novel or film script you have studied. This unit is worth 15% of the qualification.

Unit 3 - Listening Unit 3 is a listening examination worth 20% of the qualification. You will listen a range of speakers in French/Spanish and will demonstrate your understanding of what you have heard by for example, answering multiple choice questions or questions in Welsh.

Unit 4 - Reading and Writing Unit 4 is a written examination worth 35% of the qualification. For this assessment, you will read texts in French/Spanish and answers questions on them in Welsh. You will also be required to complete a translation into Welsh. Finally, you will be able to demonstrate your written language skills by writing up to 120 words in French/Spanish from a choice of 3 questions.

What Skills Will I Develop?:

- You will learn how to communicate clearly and accurately in speaking in writing.
- You will develop your understanding of the language by reading and listening items in French/Spanish.
- You will learn how to contribute to discussions and conversations.
- You will develop an awareness of the culture and society of the countries and communities where French/Spanish is spoken.
- You will make connections with your own language.

Career Within The Subject:

A GCSE in French/Spanish can open up a world of opportunities to you. There are a wide range of career paths that you could follow with a GCSE in languages, including within the more traditionally linked tourist industry, armed forces, language services such as translation and interpreting, teaching and social services. However, the great advantage of having skills in another language is that they can serve you throughout your life and career; not only useful for travel, making friends and developing a general appreciation and understanding of others' identity and culture, but also potentially useful for ANY chosen career. A qualification in International Languages shows that you are a good communicator, are willing to learn, adapt and step out of your "comfort zone" - highly desirable for any prospective employer. It may also interest you to know that in today's global business world, employees with skills in international languages are known to attract higher salaries! What's not to like?



GEOGRAPHY

Introduction:

Geography is the study of places and the relationships between people and their environments. Geographers explore the physical properties of the earth's surface and the human societies spread across it.

What Will I Study?:

TITLE/UNIT 1 - Our Physical and Human World.

Here you will study:

- Drainage basin and rivers.
- Changing coastlines
- Migration
- Settlement Change

TITLE/UNIT 3 - Our Dynamic and Diverse World.

- The geography of inequality
- The highs and lows of our weather
- Wild weather
- Continual climate change.
- Managing global challenges.

How Will I Be Assessed?:

EXAM 1 - Unit 1 Our Physical and Human World.

This is worth 30% of the qualification and is a written exam 1 hour 30 mins.

EXAM 2 - Unit 3 Our dynamic and Diverse World.

This is worth 30% of the qualification and is a written exam 1 hour 30 mins.

Non-Examination Assessments (NEA) - There are 2 NEA tasks:

Unit 2 Developing Fieldwork Skills 25% of the qualification.

You will carry out a field work visit based on a topic such as, change over time or environment, and investigate this in a chosen location, writing a fieldwork enquiry that will be submitted to WJEC.

Unit 4 Sustainable Solutions, 15% of the qualification

You will receive a resource booklet on a geographical issue and will also carry out background reading on the issue. You will then write a report based on a real-world issue in a decision- making task, reporting how sustainable the various options are likely to be.

What Skills Will I Develop?:

- Geography is always in the news. You will develop skills to interpret, analyse and evaluate information to make decisions about issues and problems that affect people and the environment.
- An ability to collect, process, analyse and understand qualitative and quantitative data and communicate it to a variety of audiences.
- Develop a reasoned argument and communicate it to a variety of audiences.
- Teamwork and leadership skills.
- Studying geography allows you to develop a range of personal skills for life, including time management, dealing with uncertainty, flexibility, creativity, problem solving and self-confidence.

Career Within The Subject:

The transferable skills developed by studying geography are actively sought by employers. There is a wealth of jobs that geographers can do spanning almost every sector! Most jobs have an element of geography in them, whether a doctor investigating the spread of disease or an engineer designing products to cope with less demand for plastic.

"The study of geography is about more than just memorizing places on a map. It's about understanding the complexity of our world, appreciating the diversity of cultures that exists across continents. And in the end, it's about using all that knowledge to help bridge divides and bring people together." **Barak Obama.**



Introduction:

We all live in a constantly changing and interconnected world. Understanding historical events is crucial for making sense of current happenings. GCSE History assists us in achieving this by examining significant events and figures from the past and their influence on our present.

What Will I Study?:

The GCSE History course allows you to explore a wide and diverse selection of topics from various historical periods and societies. Students can examine, analyse, and assess historical figures and events from the extensive array of choices available. These options include:

UNIT 1: An in-depth study on Welsh history

You will study one of six historical topics to undertake an in-depth study that will provide them with an insight into the development of Wales at a specific point in time.

UNIT 2: An in-depth study on European and/or World history

You will study one of six historical topics to undertake an in-depth study that will provide them with an understanding of an issue in European and/or world history.

UNIT 3: A study of a period in world history

You will study one of six historical topics to undertake a breadth study of an extended historical period.

UNIT 4: A changing society

You will undertake a study of themed events within a continuous period of c. 75-100 years of history.

How Will I Be Assessed?:

UNIT 1: Written examination: 1 hour TBC 30% of qualification

UNIT 2: Non-examination assessment (NEA) marked by WJEC 20% of qualification

UNIT 3: Written examination: 1 hour 30 minutes 30% of qualification

UNIT 4: Non-examination assessment: 4 hours Marked by centre and moderated by WJEC 20% of qualification

What Skills Will I Develop?:

GCSE History is the perfect subject to develop a wide range of transferable skills for employment or further study, including:

- Reaching conclusions and making judgements
- Problem solving
- Writing skills
- Research skills
- Independent study skills
- Analytical and evaluative skills
- Making connections

Career Within The Subject:

Employers are always looking for young people who are able to think critically and analytically, both key attributes of the historian. Studying GCSE History can help you take the first steps towards a variety of career paths, including law, journalism, marketing, human resources and management.

GCSE History also serves as a platform for further study at A level and undergraduate level, either in history itself or in a wide range of alternative disciplines.

It can act as the foundation stone for education of all kinds and helps develop academic skills crucial in a range of fields. These include the ability to absorb large quantities of information, sift content, analyse sources and interpretations, shape arguments and reach balanced conclusions.

HOSPITALITY & CATERING

Introduction:

The WJEC Level 1/2 Vocational Award in Hospitality and Catering has been designed to support learners in schools and colleges who want to learn about this vocational sector and the potential it can offer them for their careers or further study. This provides learners with the opportunity to develop a range of specialist and general skills that would support their progression to employment. Pupils will cook at least once every fortnight with a clear focus on standard, presentation and style in preparation for the internal assessments. Pupils will prepare an array of sweet and savoury dishes.

What Will I Study?:

This vocational WJEC course is designed to promote practical catering skills as well as providing an insight into the hospitality and catering industry. The course is awarded at pass, merit and distinction. The course is made up of two mandatory units: 1. The Hospitality and Catering Industry. 2. Hospitality and Catering in Action.

How Will I Be Assessed?:

Internal assessment: Coursework—60% of the final grade. (Including a 3 hour practical exam)

External Exam: 80 minute exam (year 11) on the hospitality and catering industry, 40% of final grade.

Homework & Independent Work:

- Every pupil must bring required ingredients to the weekly practical lesson.
- Homework will be set weekly.
- Pupils are expected to conduct independent research towards their assignments.

What Skills Will I Develop?:

The course requires and promotes several generic and transferable skills such as the ability to work independently, problem solving, working as part of a team as well as culinary skills.

Career Within The Subject:

According to the British Hospitality Association, hospitality and catering is Britain's fourth largest industry and accounts for around 10% of the total workforce. Since 2010, over 25% of all new jobs have been within the hospitality and catering sector with the majority of new roles falling within the 18-24 age group.

ICT & DIGITAL TECHNOLOGY



Introduction:

The WJEC GCSE qualification in Digital Technology is a broad-based qualification that allows learners to build on the digital skills, knowledge and understanding that is used both in their school and everyday lives. The qualification will allow learners to develop their understanding of the range of digital technology systems at use in our connected and globalised society.

What Will I Study?:

There are 3 mandatory units in the course:

Unit 1— the digital world—systems, value and perspectives on digital technology

Unit 2—Digital practices—interrogating spreadsheet data and data-informed digital procedures

Unit 3—Communicating in the digital world - social media and online marketing

How Will I Be Assessed?:

Unit 1—on-screen exam (40%)

Unit 2—non-exam assessment (40%)

Unit 3—non-exam assessment (20%)

Homework & Independent Work:

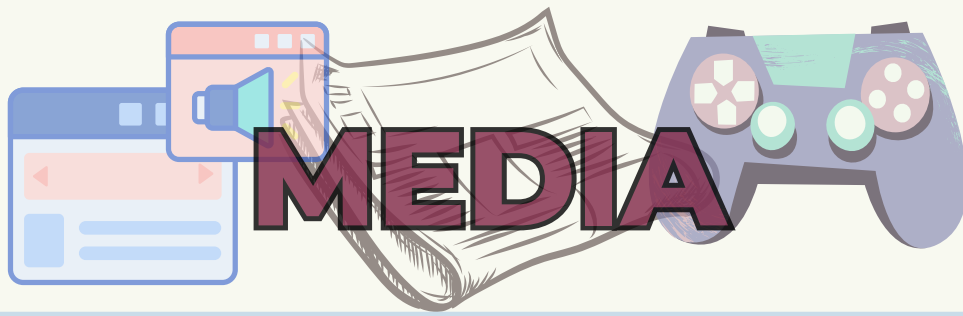
- Homework will be set occasionally.
- Pupils are expected to conduct independent research towards their assignments.

What Skills Will I Develop?:

The course provides opportunities to develop candidates' Key/Essential Skills, particularly those in problem solving, use of IT and communication. They will also have opportunities to develop their skills in application of number, working with others and improving own learning and performance.

Career Within The Subject:

Some pupils may go on to follow a higher education course or career in Information and Communication Technology or an associated area. Those with other interests and aspirations can also benefit from the many transferable skills inherent in the study of Information and Communication Technology.



Introduction:

Are you interested in the media? Have you ever thought how TV programmes, films, magazines, computer games etc are produced, or have you dreamed of producing your own work? In this course you will study a variety of examples to learn these things and develop an understanding that will allow you to produce your own work.

What Will I Study?:

Unit (exam):

Section A: Representation—advertising, video games and newspapers

Section B: Music

Unit 2: (exam):

Section A: Wales on television

Section B: Contemporary Hollywood film

Unit 3 (coursework): A media production, e.g. Website, magazine, video clip.

How Will I Be Assessed?:

- **Unit 1**—written exam, year 11, 90 min. (30%)
- **Unit 2**—written exam, year 11, 90 min. (30%)
- **Non-exam assessment.** Year 10 (40%).

Homework & Independent Work:

- Homework will be set regularly.
- Pupils are expected to conduct a variety of tasks, e.g watch TV programmes; listen to radio shows; tasks based on classwork.

What Skills Will I Develop?:

The course requires and promotes several generic and transferable skills such as literacy, digital literacy, communication, writing for specific audiences, analytical skills.

Career Within The Subject:

Journalist, graphic designer, camera person, audio work, producer, director, editor, games designer, advertising and marketing.



Introduction:

The WJEC GCSE Music qualification will support you to:

- develop performance skills
- develop creative skills
- understand musical forms, styles and genres
- appreciate how to communicate musically
- explore music created and performed by others to help develop your own talents
- reflect on, evaluate and refine your work
- explore diversity, identity and culture

What Will I Study?:

The GCSE Music qualification is based on the study and application of the elements of music:

Dynamics, form and structure, harmony, melody and pitch, performance techniques/articulation, sonority / timbre, tempo, rhythm and metre, texture, tonality.

How Will I Be Assessed?:

Unit 1 – Performing Non-exam assessment

32.5% of qualification: 78 marks Minimum 2 pieces, 4-6 minutes Solo and/or ensemble

You will select pieces that you wish to perform, individually or as part of an ensemble.

Unit 2 – Composing

Assessment Type: Non-exam assessment 32.5% of qualification: 78 marks

2 compositions, 3-6 minutes total

You will compose your own music in a style you choose, one to a set brief and one to your own brief. You will also submit an assessed reflective log.

Unit 3 – Appraising

Assessment Type: Digital exam (1h 30m) 35% of qualification: 84 marks

The exam questions will be based on extracts of music you will be able to listen to, and you will be expected to know and understand the elements of music and how they are used. You will study 2 set works in detail.

What Skills Will I Develop?:

Exploring: you will have the opportunity to explore various styles and genres of music linked to different cultures in Wales and the world and understand how they have been created to produce the intended effect. You will be able to use these ideas to create and develop your own music. You could also compose through exploring ideas in improvisation.

Responding and reflecting: you will be able to evaluate and refine your work through reflection and feedback from others, to create a successful finished product.

Creating: you will create your own original music in a style of your choosing, and a piece to meet a brief specified by WJEC using the techniques you have explored and reflected upon.

Career Within The Subject:

This qualification provides a suitable foundation for the study of Music at A-level. It will also provide a satisfying and worthwhile course of study for you if you choose not to progress to study further.

In the future, Creativity is going to be one of the most important and in-demand skills at work (World Economic Forum). When business leaders across the world were surveyed, they voted Creativity as the most important workplace capability to help their businesses survive and grow. This means that the study of creative subjects, like Music, is becoming even more important and relevant to young people to give you the chance to succeed, whatever your ambitions! At the same time, you will find many opportunities to develop and improve your personal wellbeing both independently and as part of a wider community.

Importantly, studying music will develop many transferable skills including communication, presentation skills, team working, leadership, focus, refinement, creativity and self-confidence.



PHYSICAL EDUCATION

Introduction:

Through studying GCSE Physical Education learners will acquire the knowledge, understanding, skills and values to develop their performance in physical activities and understand the benefits to health, fitness and well-being. Learners will develop theoretical knowledge and understanding of the factors that underpin physical activity and sport and use this knowledge to improve performance.

What Will I Study?:

There are two main units to the course. The 1st unit—Introduction to physical education concentrates on theory-based work whilst the second unit—the active participant in physical education concentrates on the more practical element of the subject and will entail performing individually and as part of a team. One activity will be a major activity which will have a personal fitness programme linked to the activity.

How Will I Be Assessed?:

Unit 1—Introduction to physical education—will be assessed in a 2 hour written exam at the end of year 11. (50%)

Unit 2—the active participant in physical education —will be assessed in a practical exam, one individual sport, one team sport and one other. (50%)

Homework & Independent Work:

- Homework will be set regularly.
- Pupils are expected to conduct their own independent research to further their understanding of the work.

What Skills Will I Develop?:

The course gives pupils the opportunity to develop practical health and fitness skills as well as good teamwork and communication skills.

Career Within The Subject:

As well as developing awareness of the importance of fitness, health and wellbeing in everyday life, further studies could lead to a career in the sports or leisure industry.

PRODUCT DESIGN



Introduction:

Are you interested in a career in Product Design? Do you enjoy designing and creating products? As a result of the ever changing developments in technology, this subject changes daily. 20% of Wrexham residents work in the manufacturing industry, the highest percentage in the UK. In following this course, pupils will be able to take confident and successful part in a world that is increasingly technological.

What Will I Study?:

This WJEC course gives pupils the opportunity to design and make products out of wood, metal, plastic and card. The course includes elements of resistant material, engineering, electronics and graphic design. It also offers a unique opportunity in the curriculum for learners to identify and solve real problems by designing and making products or systems.

How Will I Be Assessed?:

Unit 1—(50%) - Written exam—Technology in the 21st century. (2 hours)

Unit 2 -(50%) - Coursework—Design and Make task (35 hours)

Homework & Independent Work:

- Homework will be set every 2 weeks.
- Pupils are expected to work on their coursework in their free time.

What Skills Will I Develop?:

- Practical skills
- IT
- Literacy
- Numeracy
- Problem solving
- CAD-CAM

Career Within The Subject:

Careers are available in several fields including manufacturing, architecture, graphic design, digital design and engineering.



RELIGIOUS STUDIES

Introduction:

Are you interested in investigating ultimate questions such as What is the purpose of life? "Would you like to study topics that explain the diversity of life and religion in the modern world? Would you like to improve your philosophical thinking skills and ability to think creatively? Religious Studies helps to develop your communication skills, learn how to clearly express your views and increase your self-confidence. You will also have the necessary skills and knowledge to succeed in many interesting and exciting careers.

What Will I Study?:

Unit 1: Religious and non-religious beliefs, teachings and practices—In this unit, students will study the nature of belief. They will study Christianity, one other religion and non-religious perspectives.

Unit 2: Religion and relationships—The purpose of this unit is to understand beliefs, teachings and practices relating to relationships

Unit 3: Roles, rights and responsibilities—Amongst other things students will develop an understanding of the different perspectives and interpretations about what makes us human, caring for the world, animal rights, freedom of religious expression and medical ethics.

Unit 4: Religion and human rights—The purpose of this unit is to: consider human rights issues from religious and non-religious perspectives.

How Will I Be Assessed?:

Unit 1—Written Exam—75m—30%

Unit 2 —Non-exam assessment—6 hours—20%

Unit 3—Written Exam—75m—30%

Unit 4—Non-exam assessment—6 hours—20%

Homework & Independent Work:

Homework will be set regularly, and pupils are expected to read and do their own independent study as well as revising regularly.

What Skills Will I Develop?:

The course will help develop communication skills, both orally and in writing. It also provides the opportunity to develop critical thinking and problem solving skills.

Career Within The Subject:

Teaching and Lecturing, Civil Service, Human Resources, Journalist, Law, Social Services, The Police, Medicine, Minister, Chaplain, Historian, Charity Work.



TRIPLE SCIENCE

Introduction:

Science is a key subject for understanding the world around us. Biology is the study of living things, how they survive, interdependency and evolution. Chemistry is the study of materials, their properties, structure and reactions. Physics is a study of phenomena that cannot be seen such as energy and forces and how they control our daily lives. As well as understanding the world around you, you would also develop scientific skills through practical work. These skills will help assess the validity of information and data, evaluate and draw conclusions. Triple Science builds upon the contents of the Double Award course and provides a more solid (but not essential) foundation for advanced science courses such as A Level.

What Will I Study?:

Pupils will study 3 WJEC GCSE; Biology, Chemistry and Physics, each one containing 2 units. 3 units are taught in year 10, 3 in year 11. Practical work is part of each unit as well as a practical external exam.

Each GCSE has 2 tiers: Higher Tier A*-E and Foundation Tier C-G. These can be mixed.

How Will I Be Assessed?:

- 1 unit is assessed in a written exam in June Year 10 (45%)
- The second unit is assessed in a written exam in May / June year 11 (45%)
- A practical exam will take place in Spring year 11 and is worth 10% of the final grade.

Homework & Independent Work:

- Teachers will set homework every 2 weeks in each subject.
- We also expect pupils to read over the work and conduct their own independent study following the lessons and raise any concern with the relevant teacher.

What Skills Will I Develop?:

The ability to communicate information clearly and concisely using the correct technical language. Planning skills, careful measuring, reporting and forming a conclusion. Ability to evaluate information.

Career Within The Subject:

Engineering, electrician, medicine, vet, nurse, midwife, environmental work, working with animals, construction, catering.



01978 315050



Ysgol Morgan Llwyd, Cefn Road,
Wrexham, LL13 9NG



www.ysgolmorganllwyd.cymru



bocspost@ysgolmorganllwyd.wrexham.sch.uk



@yml_wrexham



@YsgMorganLlwyd



Ysgol Morgan Llwyd Wrexham